

[View this email in your browser](#)



Share



Tweet



Forward



PC: Susan Pipes

Dear JCV Supporters,

We are saddened by the loss of a beloved and valued member of our community last week. Benita Keller was a vital supporter in our fight against Rockwool and heavy industry. She worked tirelessly to make our community a better place and dedicated many hours to attending rallies, meetings and fundraisers, as well as documenting and photographing our fight. Benita inspired others with her fearless spirit and stunning photographs and will forever be in our hearts.

Charles Town Utility Board Struggling to Handle Increased Pollution Levels

When the Rockwool project was being planned, one controversy surrounded the Route 9 sewer extension being carried out by the Charles Town Utility Board (CTUB). Residents challenged system capacity and treatment capability in addition to the protest petition against public bond financing. Many questions arose as to contents and quantity of Rockwool sewage and would CTUB be able to process the waste. After much scrutiny, the project was substantially completed in April of 2021.

In June, CTUB was required to renew their wastewater treatment plant (WWTP) National Pollutant Discharge Elimination System (NPDES) permit through the WVDEP. This permit regulates the characteristics and volume of the wastewater discharge and ensures a systems compliance through installation, operation and maintenance of appropriate treatment technology.

As CTUB assumes responsibility to take on new Industrial users, it now is faced with how to properly treat then discharge high levels of Chloride, Iron and Aluminum. A two-year compliance schedule plan of action was granted for the discharge of Iron and Aluminum. CTUB is currently appealing the NPDES permit requirements of Chloride treatment, requesting a similar two-year grace period to evaluate the system abilities or needs for capital improvements and/or operational changes. The WV Environmental Quality board has scheduled a prehearing on 11/18 and an evidentiary hearing on 12/16 concerning the matters of CTUB's appeal.

Documentation on the NPDES permit and Notice of the Appeal may be accessed [here](#).

The utility is also updating the sewer Capacity Improvement Fees (CIFs), and the assumptions used to set the proposed rate. CIFs are collected to fund capital expenses - capacity upgrades and facility expansions - to accommodate new growth. Jefferson County is forecasting rapid growth, with many new housing development projects under consideration.

CTUB's April 2021 Sewer Strategic Plan (SSP) outlines flow projections for the WWTP, indicating expansion improvements will be necessary within the next ten years. It is anticipated that plant expansion could range from \$15 to \$20 million and are funded through conventional rate impacts, payment of prior bonds and CIFs. CTUB Directors are still identifying future capital purchases that are necessary for the expansion

and operation of the sewer system facilities before finalizing the appropriate CIFs.

The next [CTUB](#) meeting is scheduled for 11/17 at 4 pm.

Attending local government meetings is an important way you can be active in the community. Your presence helps to hold our officials accountable to the values and concerns of Jefferson County's citizens. "Think global, act local!"

View This Week's Meetings



Our online store is better than ever and back for a limited time only! We have reduced prices on most items. With the holidays around the corner, this is a great opportunity to stock up on gifts for family and friends. We are greatly appreciative of every purchase.

Shop Now

Please consider a gift to support our critical work. All proceeds will benefit JCV's efforts to lead legal, political, and community action to support

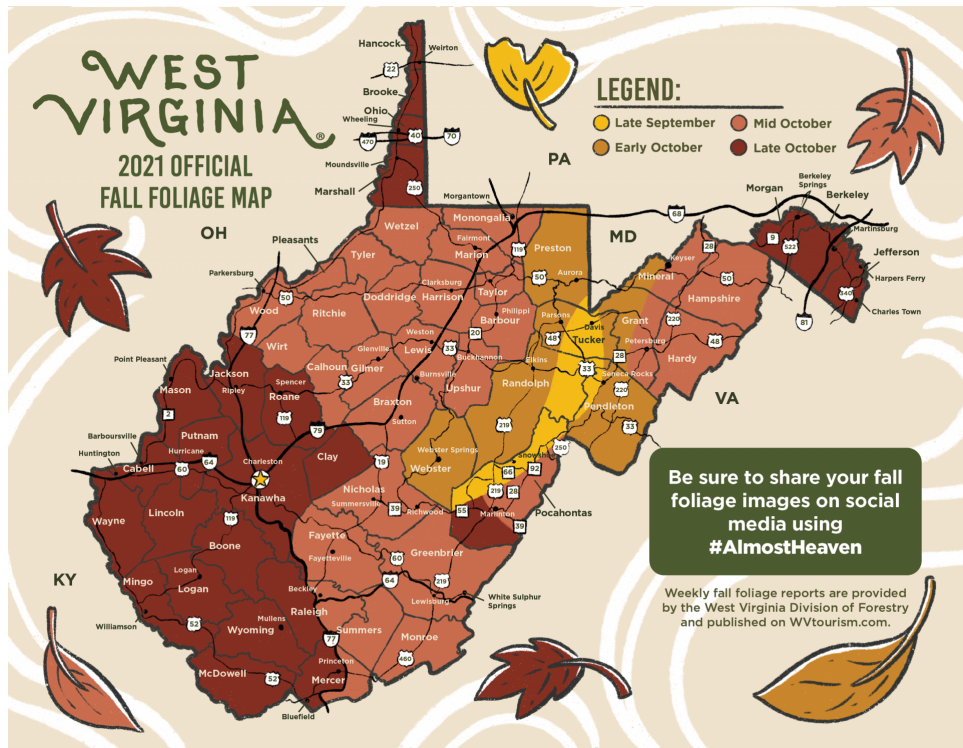
sustainable growth, without heavy industry, and to empower our citizen's voices to ensure a clean, transparent government in Jefferson County.

Donate to Support Our Work



PC: PopSugar.

Autumn is a time when our county gets to show off its beauty. As the third most forested state, the mountains of West Virginia provide unmatched scenery and awe-inspiring backdrops in the fall. We've just entered peak viewing time for vibrant fall color changes due to warmer weather. This time of year reminds us of how much our county has to offer and the importance of our fight to protect it. Check out the West Virginia 2021 Fall Foliage Map to see when the leaves will peak near you.



Map Provided by West Virginia Tourism Office



Copyright © 2021 Jefferson County Vision, All rights reserved.

Want to change how you receive these emails?
You can [update your preferences](#) or [unsubscribe from this list](#).

